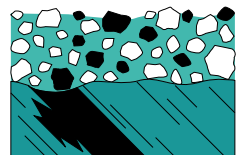


B-horizon pedogeochemical survey,  
Summit-Gaber Project,  
James Bay, Québec.

Shield Gold Inc.  
February 2011

By: Rémi Charbonneau  
Geologist, Ph.D.  
OGQ member 290

**INLANDSIS**  
Consultants



## Table of content

Abstract.....	4
Introduction .....	5
Location, access and physiography .....	5
Geology .....	5
Glacial Geology .....	7
Mineralisation.....	9
Exploration principles .....	9
Previous works .....	11
Exploration works .....	11
Acknowledgements .....	13
Results .....	13
Basic statistics.....	13
Data verification.....	17
Elemental association.....	17
Exploration targets .....	17
<i>Inset A</i> .....	17
<i>Inset B</i> .....	18
Discussion.....	23
Conclusions .....	24
Recommendations .....	24
References .....	25

## Figures

Figure 1. Location of the project area.....	6
Figure 2. Limits of Summit-Gaber and Gaber Properties and physiography.....	7
Figure 3. Geological map and known mineralizations.....	8
Figure 4. B-horizon sampling by the use of an auger probe.....	10
Figure 5. B-horizon sampling sites and claim number.....	12
Figure 6. Anomalous contours for B-horizon pedogeochemistry.....	15
Figure 7. High priority anomalies and key map for inset A and B.....	16
Figure 8. Detail of the central sector of the Summit-Gaber Property (inset A).....	19
Figure 9. Inset A superimposed on detailed Magnetic data.....	20
Figure 10. Detail of the east central sector of the Summit-Gaber Property (inset B).....	21
Figure 11. Inset B superimposed on detailed Magnetic data.....	22

## Tables

Table 1. Best assay results from known showings.....	9
Table 2. Base metal concentration observed in B-horizon.....	11
Table 3. Statistics and anomalous threshold determination.....	14

## Appendices

Appendix I : Claim List	
Appendix II : Certificates of assay	

## **Abstract**

The B-horizon surveys performed in the fall of 2010 at the Summit-Gaber Project of Shield Gold Inc resulted in the selection of 18 anomalies of high priority with variable combinations of Cu-Ag-Pt-Pd-Au. The project included the Gaber and Summit-Gaber properties, totaling 112 claims (CDC) and covering an area of 5712 ha. The project area is located west of Sakami (LG-3) in the James Bay area of Québec. Underlying bedrock includes volcanic and sedimentary units of the Yasinski Group, belonging to the Archean-aged La Grande Subprovince of the Superior. Known mineralizations consist in 13 showings exposing metric lenticular bodies of Cu-Ag with  $\pm$  Co, U, Pt, Pd and Au sulfides, alternatively attributed to VMS or Bi-Co-Ni-Ag-U type of deposits. These historical showings are distributed along an east-northeast trend over a distance of 3 kilometres.

The 2010 pedogeochemical survey included 921 B-horizon samples and systematically covered 2000 ha of prospective land. Samples were collected within 50 m spacing along north-south lines emplaced at every 300 m. Analytical results for platinum, palladium and gold by fire assay, and multi-element scan by ICP-ES at ALS-Chemex revealed 80 anomalous contours with many combinations of the analysed elements. However, based on the presence of Cu, Ag, Pt, Pd, Au, Co and U; and on the extent of the anomalous sector, 18 anomalies were classified as high priority. Most of the high priority targets are more extensive than the geochemical response found in association with the known showings, suggesting larger occurrence of mineralization yet to be discovered. In addition, the high priority anomalies are scattered over the eastern half of the property, suggesting that the mineralizing system extends over a much larger area than the trend formed with the known showings. These exploration targets clearly deserve follow-up investigations, including detailed soil and till sampling as well as prospection of outcrops and boulders.

## **Introduction**

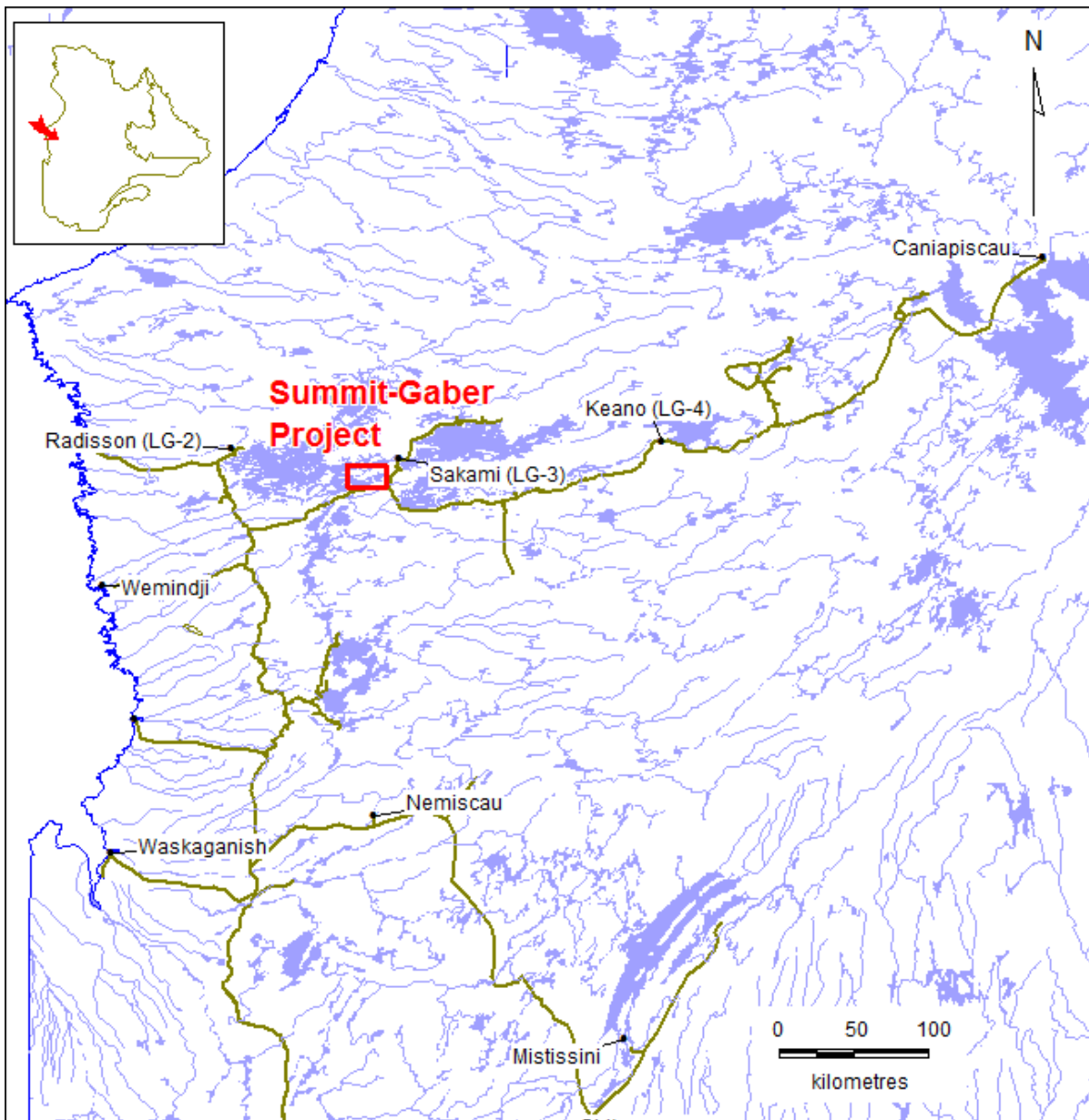
The systematic B-horizon pedological survey was performed to assess the mineral potential of the Gaber Project of Shield Gold Inc. The project area already holds Cu-Ag (Au-Pt-Pd-Co-Ni-U) mineralization, as delineated by 13 showings scattered along a 3 kilometers ENE trend (Bérubé 2009).

## **Location, access and physiography**

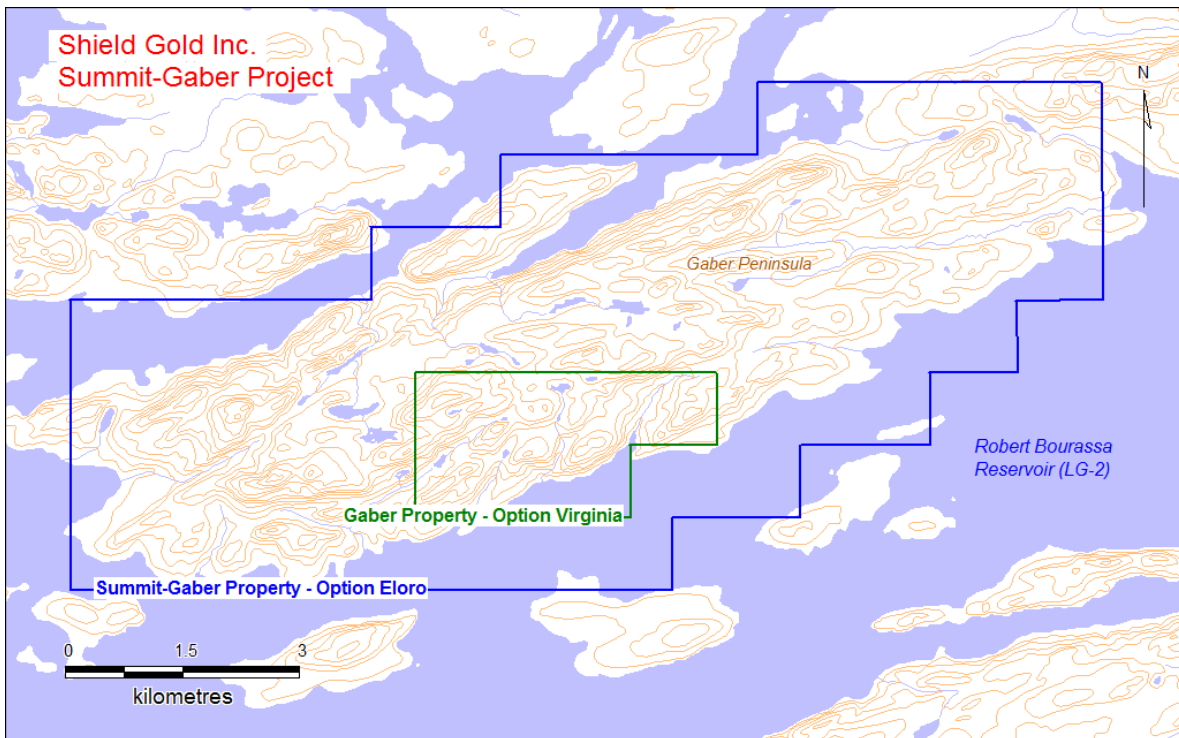
The investigated property is located in the James Bay area of Québec, immediately southwest of Sakami near the LG-3 hydroelectric complex (Figure 1). Complete access is provided by helicopter, while a limited access is also possible by boat, in areas located near the shore of the LG-3 reservoir. The property area is depicted on the 33F/09 NTS map sheet at a scale of 1 : 50 000 (Figure 2). The project lies on the Gaber Peninsula, which presents a low but sharp relief of easterly to northeasterly trending hills. The Peninsula is covered by a dense spruce forest with small minerotrophic mires on low lands near lakes or streams. Drainage occurs as a radial pattern through small streams and appears to be strongly controlled by geological structures.

## **Geology**

The area of interest rests on the LaGrande Sub-Province (Hocq 94), which belongs to the Archean-aged Superior Geological Province. The lithological units underlying the Gaber Peninsula (Figure 3) are composed of Archean metavolcanic and metasedimentary assemblage of the Yasinski Group (Goutier *et al.* 2001). These include basalt, amphibolite, andesite, dacite, wacke and thin bands of iron formation (Figure 3). These rocks were subsequently intruded by large magmatic bodies of tonalite to diorite composition, also of Archean Age. Finally, conglomerate and mudstone of the Sakami Formation were deposited during the late opening of a sedimentary basin, during the Proterozoic. The reader is referred to the geological report produced by the *Ministère des Richesses Naturelles* (Goutier *et al.* 2001) for a detailed discussion on the regional geology.



**Figure 1.** Location of the project area.

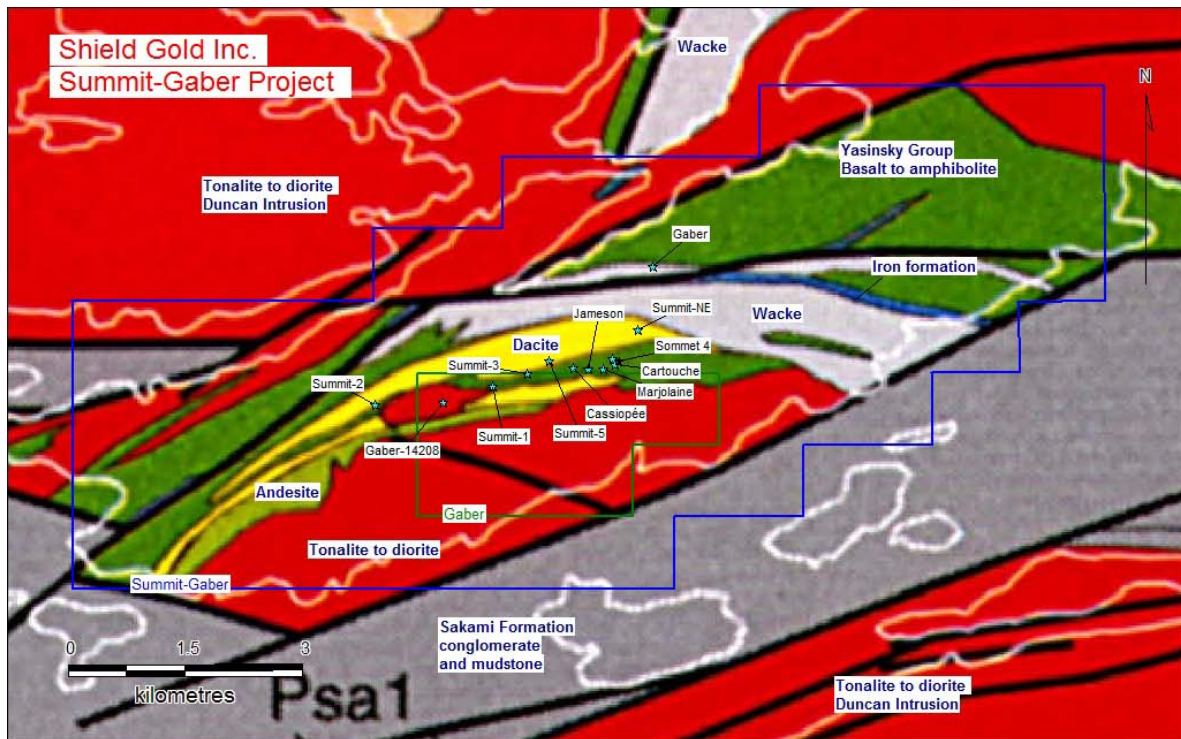


**Figure 2.** Limits of Summit-Gaber and Gaber Properties and physiography.

## Glacial Geology

The dominant ice flow is oriented to the south-west ( $240^\circ$ ) in this area (Prest et al. 1967, Fulton et al. 1995). This younger ice flow was preceded by a northwestward ice flow ( $330^\circ$ ) (Veillette 1995) tentatively attributed to the build-up of the last ice sheet (Paradis S., Pers. Comm.). A thin and discontinuous till sheet accompanied with frequent outcrops are present on the properties, which facilitate the application of pedogeochemistry and prospection in the area. However, some of the lower lands, corresponding to structurally controlled lineaments, are filled with a thicker till deposit that may be covered with organic material and small lakes. These areas can only be indirectly investigated from glacially transported signals interpreted from soil geochemistry.

Rotation90° vers page pleine dans le pdf



**Figure 3.** Geological map (Goutier *et al* 2001) and known mineralizations (Bérubé 2009).

## Mineralisation

The known Cu-Ag showings, locally with Au-Pt-Pd, Co-Ni or U (Table 1), are associated with lenticular bodies of sulphides, including pyrite and pyrrhotite and minor native silver, of metric thickness. These mineralized bodies are mainly present at the contact between the basalt and dacite units. The mineralized zones are parallel to the east-west regional schistosity (Goutier *et al.* 2001) or may follow northwest trending lineaments (Chénard 1998). They are typically associated with quartz laminae, black chlorite and epidotization-chloritization of the basalt. Deposit type has been attributed to VMS as remnants of black smoker chimneys (Goutier *et al.* 2001,) or Bi-Co-Ni-Ag-U epigenetic hydrothermal vein system (Bérubé 2009).

**Table 1.** Best assay results from known showings (adapted from Bérubé 2009)

Showing Name	Easting Nad83	Northing Zone 18	Cu (%)	Ag (gt)	Co (%)	Pt (gt)	Pd (gt)	Others
Summit-1	411140	5943382	4.8	19				
Summit-2	409629	5943183	1.3	1				
Summit-3	411604	5943534	7.8	18				
Summit-4	412726	5943668	14.6	377	3.4			Ni, As
Summit-5	411881	5943698	0.9	15				
Summit-NE	413027	5944084	0.2	26				
Cartouche	412761	5943595	0.8	>1000		15.4	10.5	Au
Marjolaine	412563	5943583	11.8	456				Zn
Jameson	412381	5943592	2.3	25	1.8			
Cassiopé	412187	5943613	2.4	12				
Gaber	413229	5944895	1.8					U
Gaber-Sud	417548	5944916	0.8					Au
Gaber-14208	410501	5943192		9				Cu, Ni

## Exploration principles

B-horizon sampling represents a standardized pedogeochemical method applied to mineral exploration. The sampled media is the brown horizon of soil (left half of probed content in Figure 4) developed from precipitation of metals previously leached from horizon A (light

grey in figure 4) at the upper most part of the soil, under the organic layer. In glaciated areas, most soil developed from till deposit, which results from direct sedimentation by the glacier. Consequently, occurring geochemical anomalies may represent glacially transported signal or in-situ ionic or hydromorphic signal. Several indications, particularly the map distribution of anomalous signals, may be used to decipher the origin of the anomaly and to precise the nature and location of the source area. In addition, pilot studies conducted near known mineralization give an indication of the geochemical level associated with significant bedrock mineralization (Table 2).



**Figure 4.** B-horizon sampling with the use of an auger probe. The brown portion of the samples soil near the tip of the auger represents the B-Horizon unit whereas the light gray material represents the A-Horizon, located in the upper part, directly under the organic layer.

**Table 2.** Base metal concentration observed in B-horizon near known mineralized bodies.

Deposit	Distinct geochemical signals	Reference
Mine Icon (Cu)	300-1000 ppm Cu	DiLabio 1982
Tervo (Ni-Cu)	200-10 000 ppm Ni, 100-1000 ppm Cu	Nurmi 1976
Mine Jameland (Cu-Zn)	200-1000 ppm Cu & Zn	Shilts 1976
Kokko Creek Zone (Cu)	-400 ppm	Ermengen 1957

## Previous works

Regional mineral exploration, initiated by *Groupe Minier S.E.S.* and *Société de Développement de la Baie-James* in the early seventies, led to the discovery of Gaber Showing (Gauthier 1975) hosting Cu and U. In 1995, reconnaissance mapping transect in this sector by Virginia Gold Mines and Barrick Gold led to the discovery of a series of showings, Summit 1 to 5 (Girard 1996). Geophysical surveys were performed by Virginia and the property was optioned to Noranda Exploration. Additional field works performed by this company in the late nineties resulted in the discovery of two showings, identified Cartouche and Marjolaine (Roger and Boucher 1997 and 1998). Short holes were later drilled by Noranda but failed to intercept the vertical extension of surficial mineralization. A short prospection campaign focusing on air photo lineament was carried out in 1999 by Virginia which resulted in a technical success, as new massive sulfides occurrences were found, although no significant base metal assay results (Chénard 1999) was returned. Finally, a magnetic survey and a geological compilation by Eloro Resources Ltd. (Bérubé 2009) reassessed the economic potential of the property and included some recommendation relative to the present pedogeochemical survey.

## Exploration works

A total of 921 B-Horizon samples (Figure 5) were collected on the fall of 2010 by a crew of 6 samplers of Consul-Teck Inc., with access by helicopter (Bell 206 Jet-Ranger) from a field camp. This survey consisted in systematic sampling of sedimentary and volcanic units



found on the Gaber and Summit-Gaber Properties. Sample spacing is of 50 m along north-south transects emplaced at every 300 m (Figure 5). The samples were submitted to ALS Chemex of Val-d'Or for drying, sieving and analysis of the fine fraction (30 g) by fire assay with ICP finish for Au, Pt and Pd determination (PGM-ICP23) plus 35 additional elements by ICP-ES (ME-ICP41) namely : Ag, Al, As, B, Ba, Be, Bi, Ca, Cd, Co, Cr, Cu, Fe, Ga, Hg, K, La, Mg, Mn, Mo, Na, Ni, P, Pb, S, Sb, Sc, Sr, Th, Ti, Tl, U, V, W and Zn. Basic statistics were determined in Excel™ spreadsheet and anomalous values (average + 2 standard deviations) were reported on map using MapInfo™ GIS facilities for drawing of the multi-element anomalous contours.

## **Acknowledgements**

Management was provided by MRB & Associates (MRB) of Val-d'Or while logistic and sampling crew was provided by Consul-Teck Exploration Inc. also of Val-d'Or. MRB finalized the geochemical database including sampling sites and analytical results. Isabelle Robillard of Inlandsis helped with the preparation of this Report.

## **Results**

A total of 80 anomalies were contoured from the anomalous values obtained for the series of 38 analysed elements (Figure 6). Out of these 80 anomalies, 18 were classified as high priority (Figure 17). The targets were selected by considering the abundance Ag, Pt, Pd, Au, Cu and Co and the extent of the anomalous sector. Specific aspects of the results are considered in the following sections. Copper values reach very high concentration, up to 8100 ppm, Ag reaches 66 ppm, Au reaches significant values of 0.271 ppm, while Pd and Pt remained respectively under 0.060 and 0.024 ppm.

### **Basic statistics**

Statistics determined for the analytical results (Appendix I) are presented in Table 2. Detailed statistics for subsets of data are presented in appendix II. Low background levels in B-horizon are observed for most of the studied elements.

**Table 3.** Statistics and anomalous threshold determination

Elem.*	Unit	N	L.D.L.	Min.	Max.	Average	St-dev	Threshold
Au	ppm	914	0.001	0.001	0.271	0.004	0.013	0.042
Pt	ppm	914	0.005	0.005	0.024	0.005	0.001	0.009
Pd	ppm	914	0.001	0.001	0.060	0.002	0.003	0.012
Ag	ppm	921	0.2	0.2	66.3	0.32	2.2	6.92
Al	%	921	0.09	0.09	9.14	1.13	0.81	3.56
As	ppm	921	2	2	184	3.01	6.68	23
B	ppm	921	10	10	10	nd**		
Ba	ppm	921	10	10	550	34.5	49.5	183
Be	ppm	921	0.5	0.5	3.7	0.51	0.11	0.85
Bi	ppm	921	2	2	3	nd		
Ca	%	921	0.01	0.01	4.7	0.22	0.44	1.53
Cd	ppm	921	0.5	0.5	3.7	0.52	0.17	1.03
Co	ppm	921	1	1	331	4.95	12.6	42.8
Cr	ppm	921	4	4	695	41	42.8	170
Cu	ppm	921	1	1	8100	41.3	291	914
Fe	%	921	0.16	0.16	15.9	1.74	1.29	5.62
Ga	ppm	921	10	10	30	10.2	1.5	14.7
Hg	ppm	921	1	1	3	nd		
K	%	921	0.01	0.01	0.43	0.04	0.06	0.2
La	ppm	921	10	10	70	11	4.4	24.2
Mg	%	921	0.01	0.01	3.06	0.28	0.31	1.2
Mn	ppm	921	1	6	5410	126	302	1031
Mo	ppm	921	1	1	23	1.2	1.27	5.02
Na	%	921	0.01	0.01	0.1	0.02	0.01	0.05
Ni	ppm	921	1	1	316	14.1	18.3	68.9
P	ppm	921	30	30	4040	233	239	950
Pb	ppm	921	2	2	57	5.12	4.12	17.5
S	%	921	0.01	0.01	0.99	0.03	0.06	0.2
Sb	ppm	921	2	2	3	nd		
Sc	ppm	921	1	1	29	2.04	1.7	7.13
Sr	ppm	921	1	1	109	8.82	8.73	35
Th	ppm	921	20	20	20	nd		
Ti	%	921	0.01	0.01	0.78	0.1	0.06	0.3
Tl	ppm	921	10	10	10	nd		
U	ppm	921	10	10	660	10.8	21.5	75.5
V	ppm	921	2	2	415	41.4	31.1	135
W	ppm	921	10	10	10	nd		
Zn	ppm	921	2	2	286	15.2	18.4	70.3

\*Elem = chemical element, N = number of determinations, L.D.L. = lower detection limit, St-dev = standard deviation.

\*\* nd – element that remained practically undetected.

# Shield Gold Inc. Summit-Gaber Project

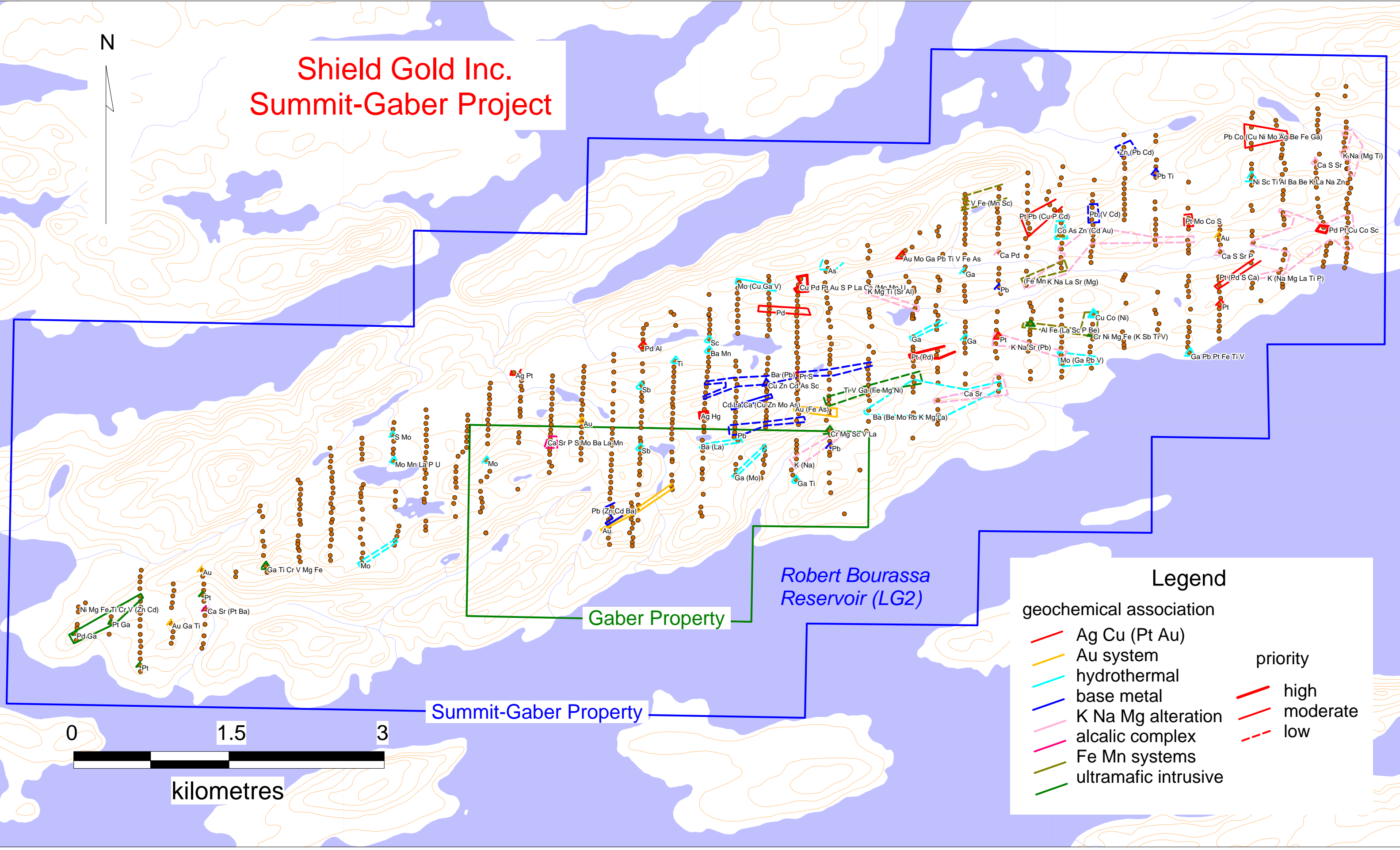


Figure 6. Anomalous contours for B-horizon pedogeochemistry.

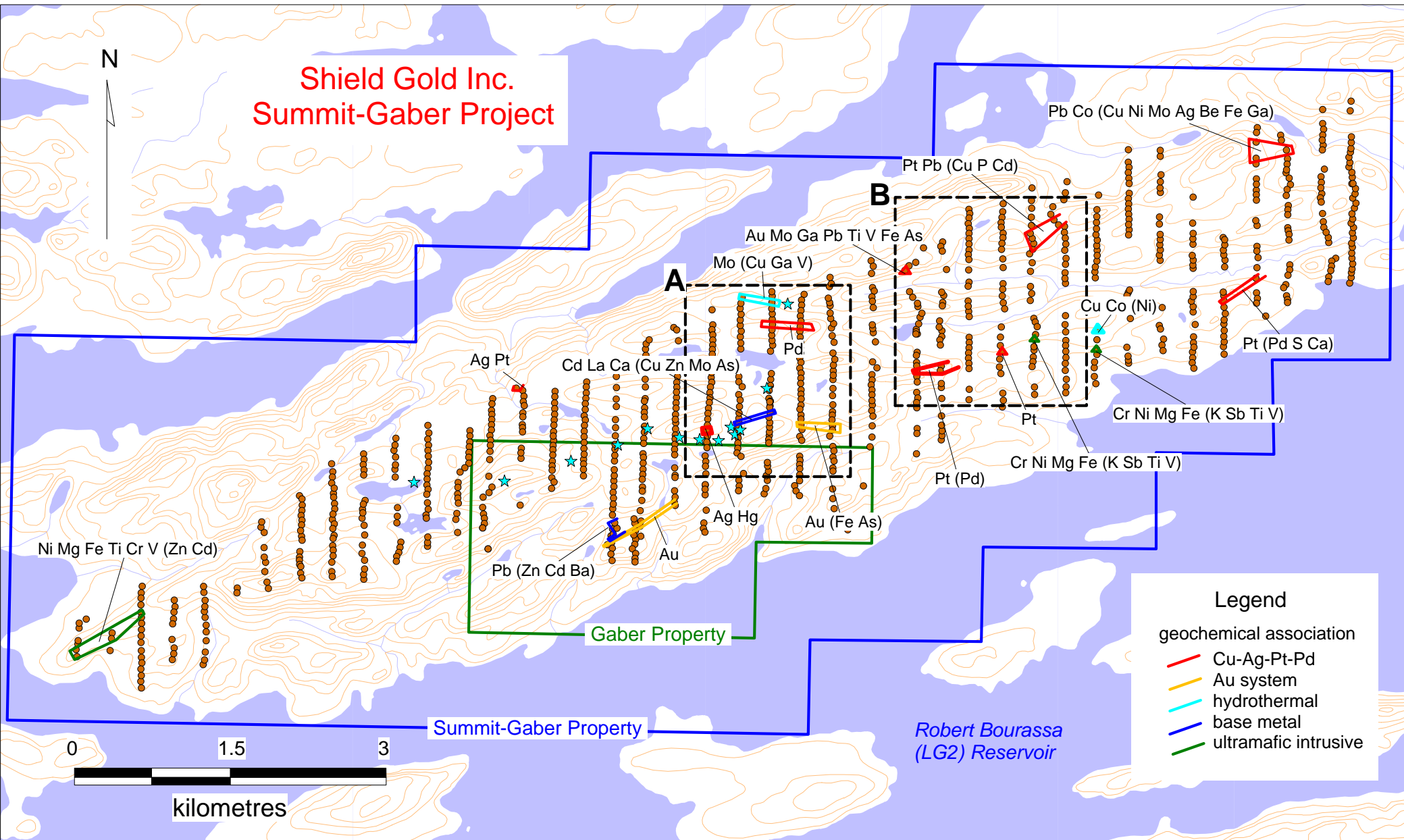


Figure 7. High priority anomalies and key map for inset A and B.

## **Data verification**

Duplicate, standard and blank samples were introduced by ALS to control analytical results in the present survey. Good consistency among these control material confirms the overall validity of the present analytical series.

## **Elemental association**

Delineated contours reveal anomalous sectors with a variety of elemental combinations (Figure 6), some of which being in accordance with geological processes. 1) the association of Cu-Ag-Pt-Pd correspond to the sought-after mineralization, based on the nature of the historical showings, 2) Au anomalies, sporadically with As-Fe-Ga- Ti are classified under “Au system”, 3) various combination of As-Ba-Cd-Ga-Mo-Sb-Ti, represent “hydrothermal” association, 4) “base metal” included combination of any Co-Cu-Ni-Pb-Zn-Cd anomalies, 5) anomalies including major elements K-Na- Mg are linked to alteration, 6) combination of Zr-Hf-V-Th with minor REE are related to an alkaline intrusive complex, 7) Fe-Mn systems with various Al-Ti-V anomalies were recognized in the study area and, finally, (8) Cr-V-Mg-Ca-Sc- Ni are related to a “ultramafic intrusive”.

## **Exploration targets**

The resulting targets are represented by anomalous contours of highest priority for the Cu-Ag-Pt-Pd, gold system and base metal associations. The majority of these exploration targets are located in the central portion of the property (Inset A and B of Figure 7). The western part of the property only presents one large anomalous contour of ultramafic association which may indicate the presence of magmatic Ni-Cu-Pt-Pd sulfides, either massive or disseminated. Two anomalies high priority for Au and base metals are present on the Garber Property, and, finally, the eastern part of the property presents three anomalous sectors of high priority.

### *Inset A*

The central part of the property (Figure 8) shows several anomalous sectors of interest. The southern part of this inset map reveals a series of elongated anomalous contours located

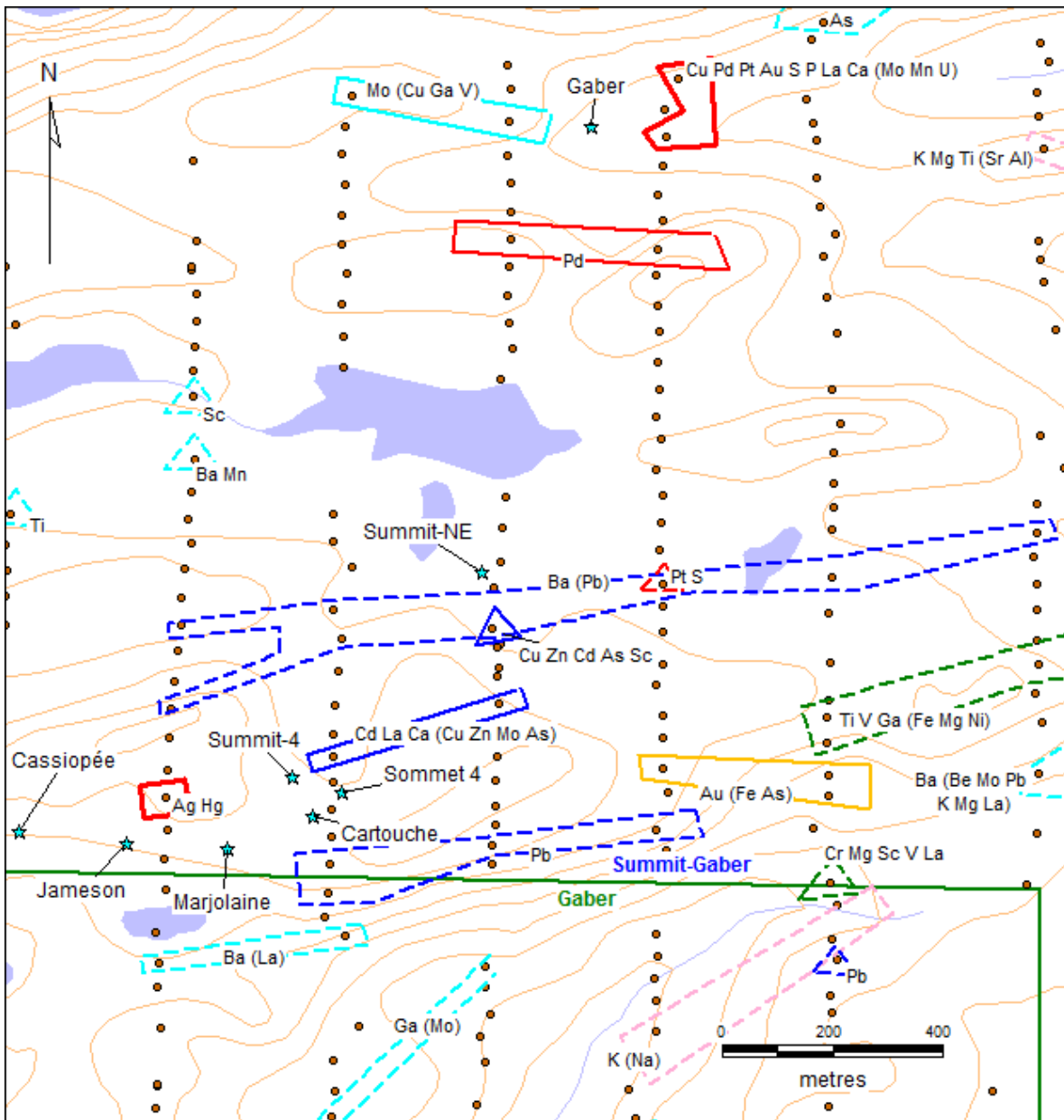
east of the known showing trends, which suggest an extension of this mineralized system. In this sector of the property, the anomalous contours are discordant with the glacial direction, suggesting a structurally-controlled anomalous trend. A single Ag-Hg anomaly west of Summit-4 and a base metal anomaly, immediately east of this showing, illustrates the geochemical response of the known mineralization. Finally, a gold anomaly (Fe-As) is present in this sector and hosts the highest assay of 0.271 g/t Au.

Two anomalous sectors of high priority are shown in the northern part of inset A (Figure 8) respectively east and west of the initial Gaber Showing. These anomalies included Mo-Cu-Pt-Pd-Au-U which is compatible with mineralization of the Gaber property and strongly suggest a larger extent for this mineralized occurrence.

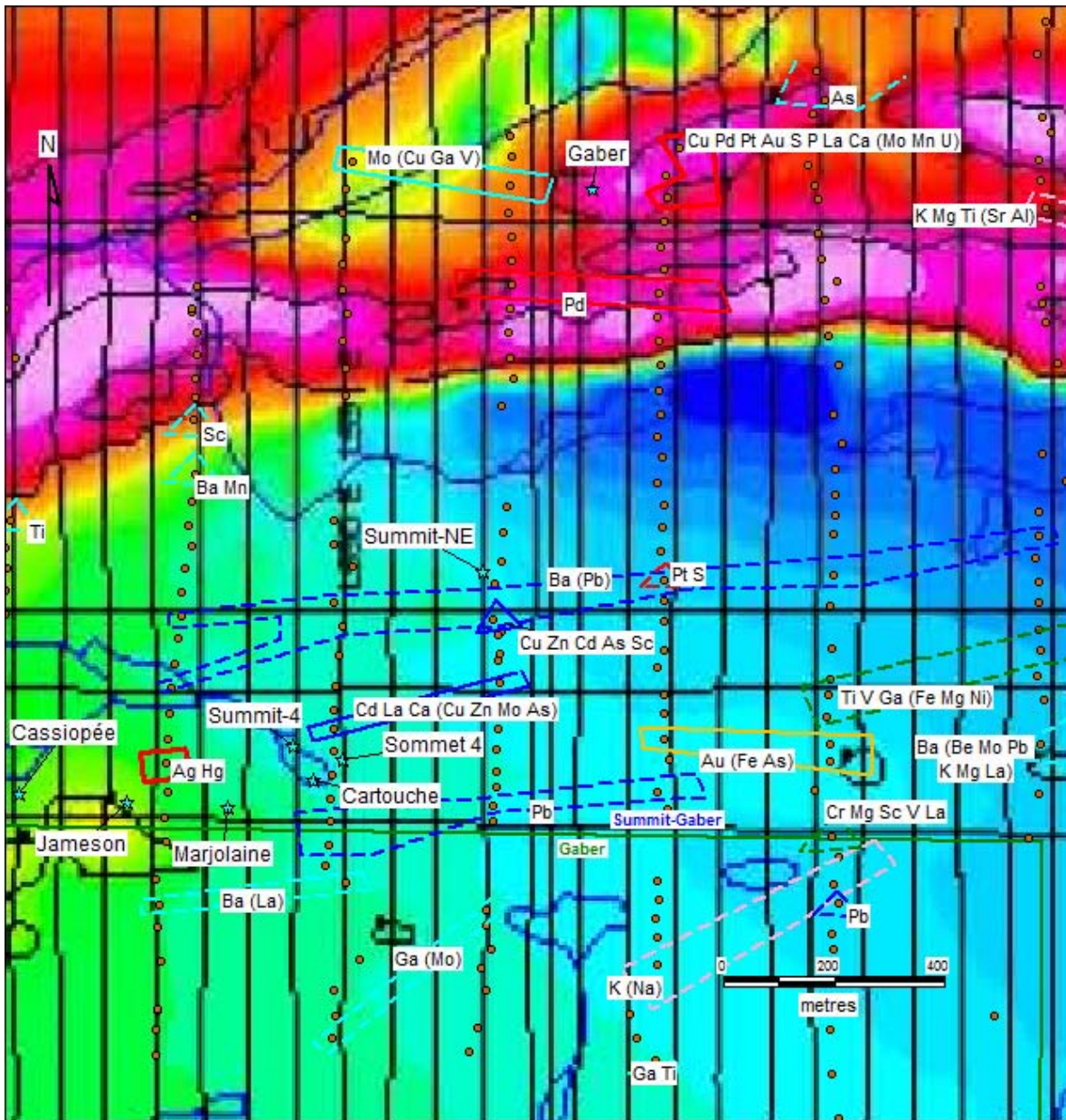
When considered over magnetic data (Figure 9), it appears that the southern anomalies occur on a magnetic low area, corresponding to lithological units of mostly sedimentary and felsic volcanic composition. In turn, the northern anomalies occurred on a magnetic high corresponding to the basalt units of Yasinsky Group. In more detail, the Cu-Pd- Pt and the Gaber showing are located within the same magnetic high. No significant pedogeochemical anomalies are found at or near the transition between the magnetic high and low areas.

### *Inset B*

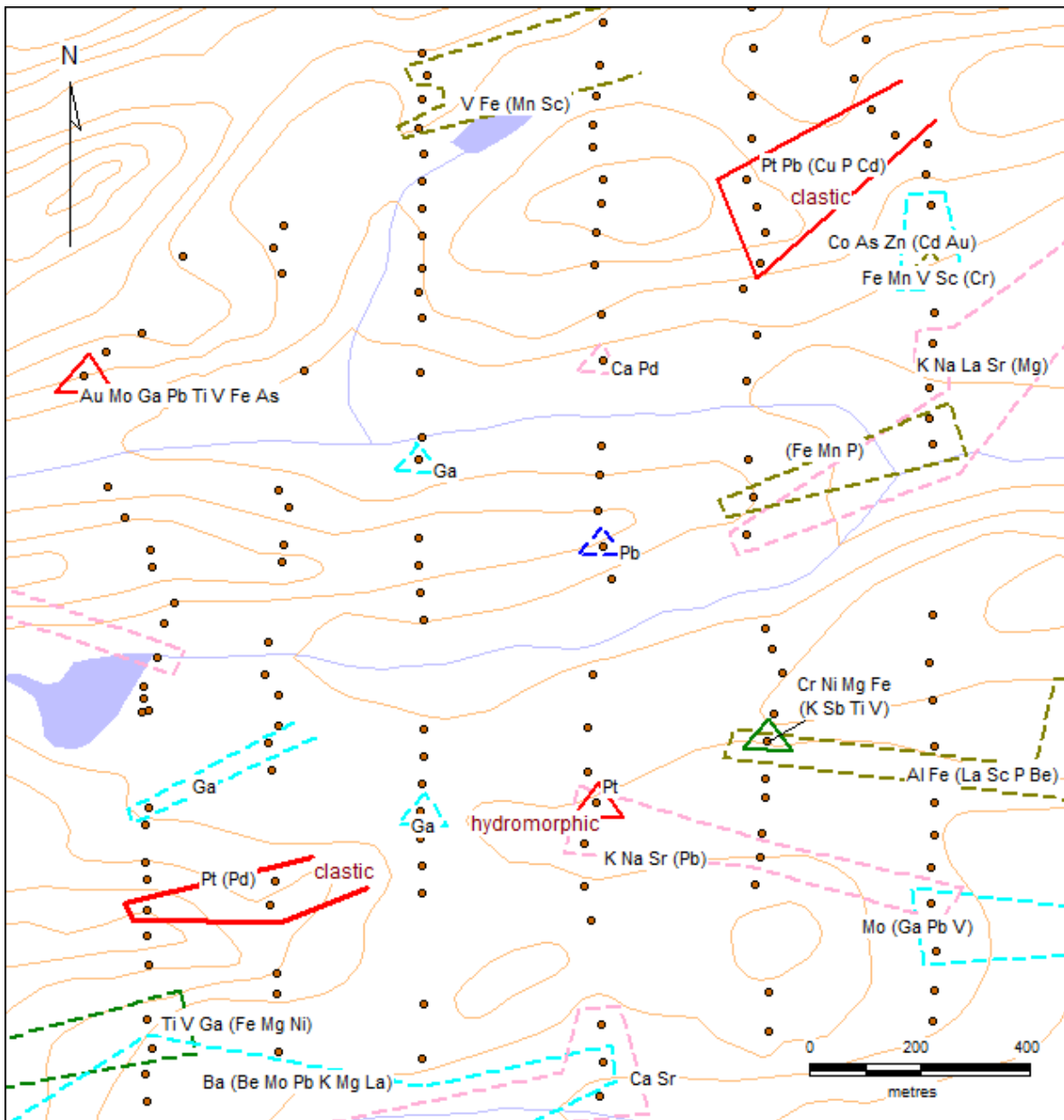
The east central part of the project area (Figure 10) also shows several anomalous contours of high priority. Here however, the orientation of the two largest anomalous sectors of Cu-Ag-Pt-Pd association (shown in red, Figure 10) is compatible with glacial transport, which suggests a clastic origin for these anomalous sectors. The southernmost anomaly pointed toward an isolated signal of Pt which may correspond to a glacially transported “clastic” anomaly located down-ice from a “hydromorphic”, or ionic, *in-situ* anomaly (Miller 1984), as depicted in Figure 10. The intervening zone of silence in between is measuring less than 600 m which is close to the typical distance for such a situation. When considered over magnetic data (Figure 11), the hydromorphic Pt anomaly resides near a sharp contact between a low MAG area to the south and a high MAG area to the north. Consequently, the sector of inset B contains exploration targets of great interest.



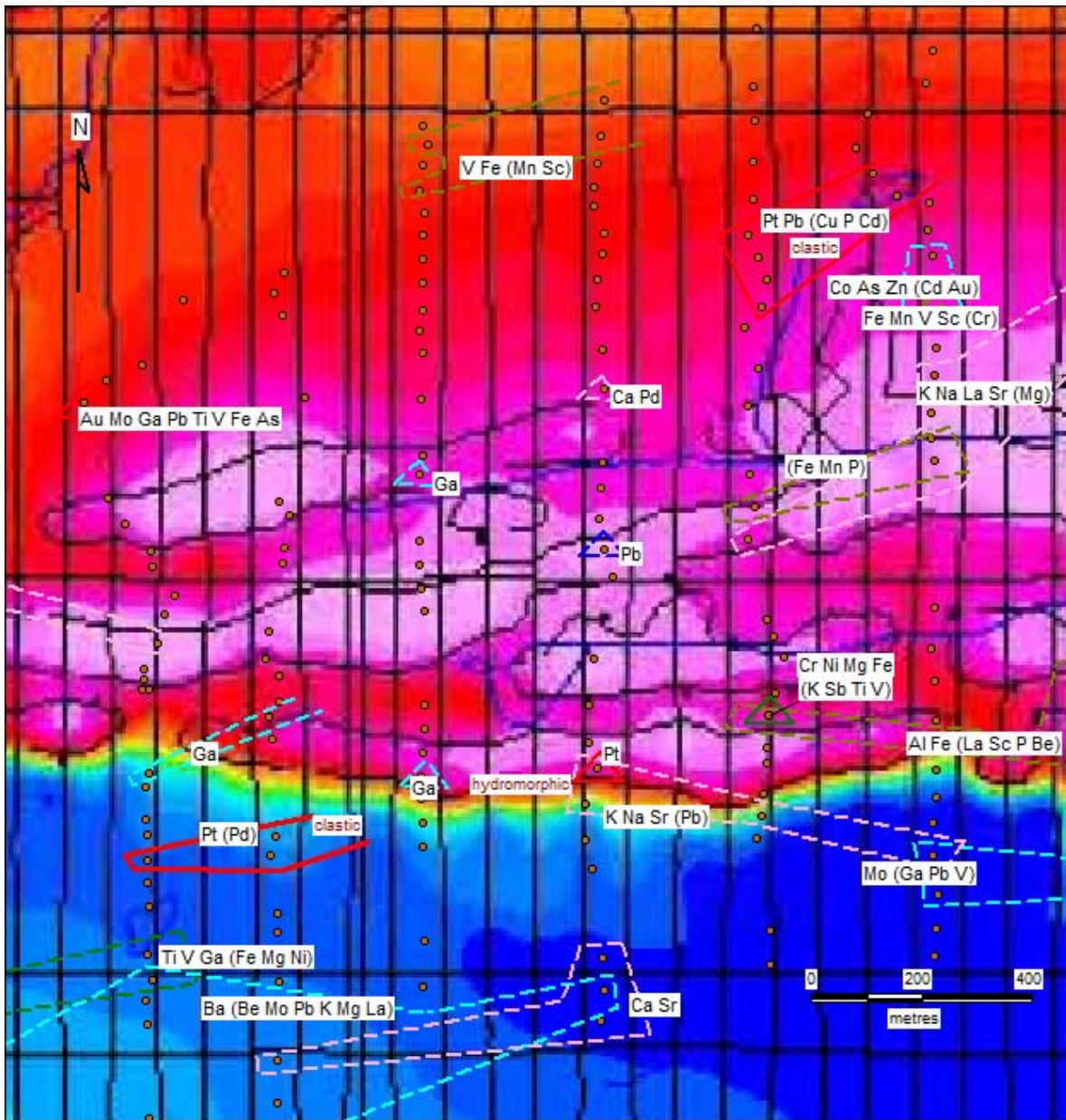
**Figure 8.** Detail of the central sector of the Summit-Gaber Property (inset A). See figure 6 for geochemical legend).



**Figure 9.** Inset A superimposed on detailed Magnetic data (from Cifuentes 2009).



**Figure 10.** Detail of the central sector of the Summit-Gaber Property (inset B). See figure 6 for geochemical legend).



**Figure 11.** Inset B superimposed on detailed Magnetic data (from Cifuentes 2009).

## Discussion

Although the Bi-Co-Ni-Ag-U deposit model may well apply to the Summit-Gaber project area, the present geochemical results for both known showings and pedogeochemical anomalies rather suggest a Cu and Ag deposit model with various U-Co-As-Pt-Pd-Au. In fact, the pedogeochemical results show a strong dominance for Cu. In the present interpretation however, the attribution of a high priority sector was biased in favor with the presence of precious metals (Pt-Pd-Au) due to their high economic values. This bias resulted in the selection of Cu-Ag-Pt-Pd associations, as those present at the Cartouche showing (see Table 1), for the best representation of the sought-after mineralization. The present B-Horizon survey produced numerous scattered anomalous contours of relatively small size which is in good agreement with the distribution of the known mineralization. Their presence however suggests a much larger extent of the mineralized system, as anticipated by Bérubé (2009). Although some examples of glacially transported anomalies are discussed above for Inset B sector (Figure 10), most anomalous sectors show an east-west orientation that diverge from the ice flow direction, thus suggesting a local, structurally controlled origin. Because many anomaly of high priority are much larger than the geochemical response found near the known showings (Inset A and Figure 8), they must indicate the present of more extensive mineralization and consequently request more detailed investigation.

## Conclusions

- The 2009 pedogeochemical programs (921 B-horizon samples) represent a systematic coverage of the Summit-Gaber project area.
- Many significant signals for Cu, Ag, Pt, Pd and Au, amongst many other analysed elements, resulted in the contouring of 80 anomalies, 18 of which being of high priority.
- Most of the high priority anomalies are larger than the geochemical response association to the known showings, suggesting a larger extent for the mineralization.
- Distributions of pedogeochemical anomalies indicate that the mineralizing system is much larger than the known showings trends, extending to all the eastern part of the project area.

## Recommendations

It is recommended to perform detailed sampling of soils, tills, boulders and outcrops on the 18 high priority anomalies in order to detect their bedrock source.

<<signed>>

Rémi Charbonneau  
Ph.D., P.Geol., OGQ member 290

## References

- Bérubé, J.-P., 2009**, Summit-Gaber Property, James Bay Area, Quebec, Canada, 43-101 compliant technical report; MRB and associates for Eloro Resources Ltd and Shield Gold Inc, 41 p. 5 maps.
- Charbonneau, R., 2005**, B-horizon pedogeochemical survey on Félicie, Corvet West and Islands Lake Properties, James Bay area, Québec; Inlandsis Consultants for Virginia Mines inc. 20 p. 1 map.
- Cifuentes, C., 2009**, Heliborne high resolution magnetic survey, interpretation report, Summit-Gaber Property, Québec, Canada; Abitibi Geophysics Inc. for Eloro Resources Ltd., in Bérubé 2009, 43-101 technical report, as Appendix V, p. 58 to 75, 3 maps.
- Chénard, D., 1999**, Rapport des travaux de terrain, Automne 1999, Propriété Gaber; Datac Géo-conseil pour Mines d'Or Virginia inc., GM57509, 21 p.
- DiLabio, R.N.W., 1981**, Glacial dispersal of rock and minerals at the South end of Lac Mistassini, Quebec, with special reference to the Icon dispersal train; Geological Survey of Canada, bulletin 323, 80 p.
- Eade, K.E., 1966**, Fort George River and Kaniapiskau River West Half map area. New Quebec; Geological Survey of Canada, memoir 339.
- Ekstrom, R.L.V., 1960**, Geological report and 5 DDH logs in the Corvette-La Grande River area; Tyrone Mines ltd., GM 10515, 34 p. 7 maps.
- Ermengen, S.V., 1957**, Geochemical prospecting in Chibougamau; Canadian Mining Journal, v. 78, p 99-104.
- Fulton, R.J., 1995**, Surficial materials of Canada ; Geological Survey of Canada, Map 1880A, scale 1 :5 000 000. Formations en surface du Canada;
- Girard, R., 1996**, Géologie et évaluation des permis d'exploration Sakami, Sakami-Extension, Gaber, Lac Amélie, Lac au Caribou, Mills et Sipanika et des terrains réservés au jalonnement TA-30, Bézier, Kawawashikamach et Gaber-Extension; I.O.S. Géoservices pour S.T.G., Mines d'Or Virginia inc et Barrick Gold Corp Inc. GM 54440, 453 p. 29 maps.
- Goutier, J, Dion, C., Ouellet, M.-C., Mercier-Langevin, P. and Davis, E.W., 2001**, *Géologie de la colline Masson (33F/09), de la passe Awapakamich (33F/10), de la baie Carbillet (33F/15) et de la passe Pikwahipahan (33F/16); MRN, rapport géologique 2000-10, 68 p. 4 cartes.*
- Hocq, M., 1994**, La province du Supérieur. In Géologie du Québec, Ministère des Richesses Naturelles, Québec, MM 94-01: 7-20.

- McClenaghan, M.B. 1999**, Till geochemical signatures associated with gold deposits in the Timmins-Matheson area, Western Abitibi Greenstone Belt, northeastern Ontario; Geological Survey of Canada, Open File 3707, 90 p.
- Miller, J.K., 1984**, Model for clastic indicator trains in till; Prospecting in area of glaciated terrain - 1084, Institute for Mining and Metallurgy, London, p. 69-77.
- Nurmi, A., 1976**, Geochemistry of the till blanket at the Talluskanva Ni-Cu ore deposit, Tervo, Central Finland; Geological survey of Finland, report of investigation 15, 84 p.
- Oswald, R., 2005**, *Rapport des travaux 200 et compilation5, Propriétés FCI; Services techniques Geonordic inc. pour Mines Virginia inc.*, 30 p.
- Oswald R., 2006, in prep**, *Rapport des travaux d'exploration 2006, Propriétés FCI; Services techniques Geonordic inc. pour Mines Virginia inc.*, 32 p. s.
- Prest, V.K., Grant, D.R. and Rampton, V.N., 1967**, Glacial Map of Canada; Geological Survey of Canada, Map 1253A, scale 1 :5 000 000.
- Roger, G. et Boucher, R., 1997**, Rapport sur les travaux d'exploration effectués en 1997, propriété La Grande Nord, Baie-James, Exploration Noranda inc., GM 55906, 197 p. 4 cartes.
- Roger, G. et Boucher, R., 1998**, Rapport sur les travaux d'exploration effectués en 1998, propriété La Grande Nord, Baie-James, Exploration Noranda inc., GM 56295, 51 p. 3 cartes.
- Sharma, K.N.M., 1976**, Région de la Grande Rivière, territoire du Nouveau-Québec, Ministère des Richesses Naturelles du Québec, DP-345, 26 p., 1 : 63 360 and 1 : 31 640 scale maps.
- Shilts, W.W., 1976**, Glacial till and mineral exploration; in Legget, R.F. (ed), Glacial till; Royal Society of Canada, special publication 12, p.205-233.
- Simard, P., 2001**, Rapport de la campagne de forages, propriétés Corvet Ouest et Island Lake; Services Techniques Geonordic inc pour Sudbury Contact Mines Ltd, Mentor exploration and development Co ltd et Mines d'Or Virginia inc., GM58893, 171 p. 6 plans.
- Veillette, J.J., 1995**, New evidence for northwestward glacial ice flow, James Bay region, Quebec; in Geological Survey of Canada, Current Research part C, paper 1995-C, p. 249-258.

## Appendix I - Claims list

**Summit-Gaber Property**

<b>Claim#</b>	<b>NTS</b>	<b>row</b>	<b>col.</b>	<b>area (ha)</b>	<b>registry</b>	<b>ownership</b>
90155	33F/9	0018	0029	51.00	05/08/18	Eloro Resources Ltd (100%)
90153	33F/9	0018	0027	51.00	05/08/18	Eloro Resources Ltd (100%)
90152	33F/9	0018	0026	51.00	05/08/18	Eloro Resources Ltd (100%)
2032392	33F/9	0014	0020	51.00	06/11/16	Eloro Resources Ltd (100%)
2032397	33F/9	0015	0012	51.00	06/11/16	Eloro Resources Ltd (100%)
2032406	33F/9	0015	0017	51.00	06/11/16	Eloro Resources Ltd (100%)
2032420	33F/9	0017	0011	51.00	06/11/16	Eloro Resources Ltd (100%)
2032422	33F/9	0017	0014	51.00	06/11/16	Eloro Resources Ltd (100%)
2032426	33F/9	0017	0027	51.00	06/11/16	Eloro Resources Ltd (100%)
2032431	33F/9	0017	0013	51.00	06/11/16	Eloro Resources Ltd (100%)
2032438	33F/9	0018	0033	51.00	06/11/16	Eloro Resources Ltd (100%)
2032451	33F/9	0019	0032	51.00	06/11/16	Eloro Resources Ltd (100%)
90141	33F/9	0016	0017	51.00	05/08/18	Eloro Resources Ltd (100%)
90154	33F/9	0018	0028	51.00	05/08/18	Eloro Resources Ltd (100%)
2032387	33F/9	0014	0015	51.00	06/11/16	Eloro Resources Ltd (100%)
2032390	33F/9	0014	0018	51.00	06/11/16	Eloro Resources Ltd (100%)
2032398	33F/9	0015	0013	51.00	06/11/16	Eloro Resources Ltd (100%)
2032400	33F/9	0015	0015	51.00	06/11/16	Eloro Resources Ltd (100%)
2032405	33F/9	0015	0011	51.00	06/11/16	Eloro Resources Ltd (100%)
2032409	33F/9	0016	0011	51.00	06/11/16	Eloro Resources Ltd (100%)
2032418	33F/9	0016	0025	51.00	06/11/16	Eloro Resources Ltd (100%)
2032425	33F/9	0017	0026	51.00	06/11/16	Eloro Resources Ltd (100%)
2032432	33F/9	0018	0017	51.00	06/11/16	Eloro Resources Ltd (100%)
2032434	33F/9	0018	0019	51.00	06/11/16	Eloro Resources Ltd (100%)
2032447	33F/9	0019	0028	51.00	06/11/16	Eloro Resources Ltd (100%)
2032452	33F/9	0019	0033	51.00	06/11/16	Eloro Resources Ltd (100%)
2144027	33F/9	0020	0028	51.00	08/02/21	Eloro Resources Ltd (100%)
90151	33F/9	0018	0025	51.00	05/08/18	Eloro Resources Ltd (100%)
2032384	33F/9	0014	0012	51.00	06/11/16	Eloro Resources Ltd (100%)
2032385	33F/9	0014	0013	51.00	06/11/16	Eloro Resources Ltd (100%)
2032389	33F/9	0014	0017	51.00	06/11/16	Eloro Resources Ltd (100%)
2032402	33F/9	0015	0024	51.00	06/11/16	Eloro Resources Ltd (100%)
2032404	33F/9	0015	0026	51.00	06/11/16	Eloro Resources Ltd (100%)
2032407	33F/9	0015	0023	51.00	06/11/16	Eloro Resources Ltd (100%)
2032411	33F/9	0016	0013	51.00	06/11/16	Eloro Resources Ltd (100%)
2032419	33F/9	0017	0010	51.00	06/11/16	Eloro Resources Ltd (100%)

## Appendix I - Claims list

**Summit-Gaber Property**

<b>Claim#</b>	<b>NTS</b>	<b>row</b>	<b>col.</b>	<b>area (ha)</b>	<b>registry</b>	<b>ownership</b>
2032421	33F/9	0017	0012	51.00	06/11/16	Eloro Resources Ltd (100%)
2032437	33F/9	0018	0032	51.00	06/11/16	Eloro Resources Ltd (100%)
2032443	33F/9	0019	0024	51.00	06/11/16	Eloro Resources Ltd (100%)
2032446	33F/9	0019	0027	51.00	06/11/16	Eloro Resources Ltd (100%)
2032450	33F/9	0019	0031	51.00	06/11/16	Eloro Resources Ltd (100%)
2143994	33F/9	0020	0030	51.00	08/02/21	Eloro Resources Ltd (100%)
2144025	33F/9	0020	0026	51.00	08/02/21	Eloro Resources Ltd (100%)
2144028	33F/9	0020	0033	51.00	08/02/21	Eloro Resources Ltd (100%)
90148	33F/9	0017	0023	51.00	05/08/18	Eloro Resources Ltd (100%)
90144	33F/9	0017	0019	51.00	05/08/18	Eloro Resources Ltd (100%)
90156	33F/9	0018	0030	51.00	05/08/18	Eloro Resources Ltd (100%)
90146	33F/9	0017	0021	51.00	05/08/18	Eloro Resources Ltd (100%)
90149	33F/9	0017	0024	51.00	05/08/18	Eloro Resources Ltd (100%)
92283	33F/9	0018	0024	51.00	05/09/02	Eloro Resources Ltd (100%)
2032382	33F/9	0014	0010	51.00	06/11/16	Eloro Resources Ltd (100%)
2032401	33F/9	0015	0016	51.00	06/11/16	Eloro Resources Ltd (100%)
2032413	33F/9	0016	0015	51.00	06/11/16	Eloro Resources Ltd (100%)
2032417	33F/9	0016	0029	51.00	06/11/16	Eloro Resources Ltd (100%)
2032428	33F/9	0017	0029	51.00	06/11/16	Eloro Resources Ltd (100%)
2032441	33F/9	0019	0022	51.00	06/11/16	Eloro Resources Ltd (100%)
2032444	33F/9	0019	0025	51.00	06/11/16	Eloro Resources Ltd (100%)
90147	33F/9	0017	0022	51.00	05/08/18	Eloro Resources Ltd (100%)
90150	33F/9	0017	0025	51.00	05/08/18	Eloro Resources Ltd (100%)
2032383	33F/9	0014	0011	51.00	06/11/16	Eloro Resources Ltd (100%)
2032386	33F/9	0014	0014	51.00	06/11/16	Eloro Resources Ltd (100%)
2032388	33F/9	0014	0016	51.00	06/11/16	Eloro Resources Ltd (100%)
2032399	33F/9	0015	0014	51.00	06/11/16	Eloro Resources Ltd (100%)
2032412	33F/9	0016	0014	51.00	06/11/16	Eloro Resources Ltd (100%)
2032423	33F/9	0017	0015	51.00	06/11/16	Eloro Resources Ltd (100%)
2032442	33F/9	0019	0023	51.00	06/11/16	Eloro Resources Ltd (100%)
2032449	33F/9	0019	0030	51.00	06/11/16	Eloro Resources Ltd (100%)
90143	33F/9	0017	0018	51.00	05/08/18	Eloro Resources Ltd (100%)
90140	33F/9	0016	0016	51.00	05/08/18	Eloro Resources Ltd (100%)
2032393	33F/9	0014	0021	51.00	06/11/16	Eloro Resources Ltd (100%)
2032403	33F/9	0015	0025	51.00	06/11/16	Eloro Resources Ltd (100%)
2032415	33F/9	0016	0027	51.00	06/11/16	Eloro Resources Ltd (100%)

Appendix I - Claims list

**Summit-Gaber Property**

<b>Claim#</b>	<b>NTS</b>	<b>row</b>	<b>col.</b>	<b>area (ha)</b>	<b>registry</b>	<b>ownership</b>
2032416	33F/9	0016	0028	51.00	06/11/16	Eloro Resources Ltd (100%)
2032424	33F/9	0017	0016	51.00	06/11/16	Eloro Resources Ltd (100%)
2032427	33F/9	0017	0028	51.00	06/11/16	Eloro Resources Ltd (100%)
2143993	33F/9	0020	0029	51.00	08/02/21	Eloro Resources Ltd (100%)
2143996	33F/9	0020	0032	51.00	08/02/21	Eloro Resources Ltd (100%)
90142	33F/9	0017	0017	51.00	05/08/18	Eloro Resources Ltd (100%)
92282	33F/9	0018	0023	51.00	05/09/02	Eloro Resources Ltd (100%)
90157	33F/9	0018	0031	51.00	05/08/18	Eloro Resources Ltd (100%)
92281	33F/9	0018	0022	51.00	05/09/02	Eloro Resources Ltd (100%)
2032391	33F/9	0014	0019	51.00	06/11/16	Eloro Resources Ltd (100%)
2032395	33F/9	0014	0022	51.00	06/11/16	Eloro Resources Ltd (100%)
2032408	33F/9	0016	0010	51.00	06/11/16	Eloro Resources Ltd (100%)
2032410	33F/9	0016	0012	51.00	06/11/16	Eloro Resources Ltd (100%)
2032414	33F/9	0016	0026	51.00	06/11/16	Eloro Resources Ltd (100%)
2032430	33F/9	0017	0031	51.00	06/11/16	Eloro Resources Ltd (100%)
2032435	33F/9	0018	0020	51.00	06/11/16	Eloro Resources Ltd (100%)
2032440	33F/9	0019	0021	51.00	06/11/16	Eloro Resources Ltd (100%)
90145	33F/9	0017	0020	51.00	05/08/18	Eloro Resources Ltd (100%)
2032394	33F/9	0014	0023	51.00	06/11/16	Eloro Resources Ltd (100%)
2032396	33F/9	0015	0010	51.00	06/11/16	Eloro Resources Ltd (100%)
2032429	33F/9	0017	0030	51.00	06/11/16	Eloro Resources Ltd (100%)
2032433	33F/9	0018	0018	51.00	06/11/16	Eloro Resources Ltd (100%)
2032436	33F/9	0018	0021	51.00	06/11/16	Eloro Resources Ltd (100%)
2032439	33F/9	0019	0020	51.00	06/11/16	Eloro Resources Ltd (100%)
2032445	33F/9	0019	0026	51.00	06/11/16	Eloro Resources Ltd (100%)
2032448	33F/9	0019	0029	51.00	06/11/16	Eloro Resources Ltd (100%)
2143995	33F/9	0020	0031	51.00	08/02/21	Eloro Resources Ltd (100%)
2144026	33F/9	0020	0027	51.00	08/02/21	Eloro Resources Ltd (100%)

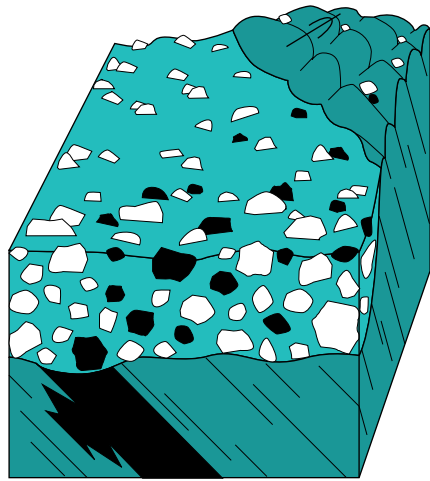
**Gaber Property**

<b>Claim#</b>	<b>NTS</b>	<b>row</b>	<b>col.</b>	<b>area (ha)</b>	<b>registry</b>	<b>ownership</b>
1042752	33F/9	0016	0020	51.00	01/12/15	Mines Virginia Inc. (100%)
1042748	33F/9	0015	0021	51.00	01/12/15	Mines Virginia Inc. (100%)
1042754	33F/9	0016	0022	51.00	01/12/15	Mines Virginia Inc. (100%)
1042749	33F/9	0015	0022	51.00	01/12/15	Mines Virginia Inc. (100%)
1042745	33F/9	0015	0018	51.00	01/12/15	Mines Virginia Inc. (100%)

Appendix I - Claims list

**Gaber Property**

<b>Claim#</b>	<b>NTS</b>	<b>row</b>	<b>col.</b>	<b>area (ha)</b>	<b>registry</b>	<b>ownership</b>
1042756	33F/9	0016	0024	51.00	01/12/15	Mines Virginia Inc. (100%)
1042755	33F/9	0016	0023	51.00	01/12/15	Mines Virginia Inc. (100%)
1042746	33F/9	0015	0019	51.00	01/12/15	Mines Virginia Inc. (100%)
1042747	33F/9	0015	0020	51.00	01/12/15	Mines Virginia Inc. (100%)
1042751	33F/9	0016	0019	51.00	01/12/15	Mines Virginia Inc. (100%)
1042750	33F/9	0016	0018	51.00	01/12/15	Mines Virginia Inc. (100%)
1042753	33F/9	0016	0021	51.00	01/12/15	Mines Virginia Inc. (100%)



INLANDSIS Consultants